

FUTURE LEADERS

THE NEXT GENERATION OF LIGHTING LUMINARIES

LD+A profiles 25 rising stars in the lighting profession

To compile our list of “Future Leaders,” *LD+A* editors reached out to more than 50 lighting professionals representing all corners of the industry and asked that they submit nominations. *LD+A* also contacted IES leadership at the Section level, as well as IES members involved in both the IES Emerging Professionals and Young Professionals Scholarship programs, for their feedback. We asked each of these people to recommend those with approximately five years experience who are on the cusp of leadership positions (e.g., technical, management, educational) in the industry.

LD+A then selected 25 of these professionals to be profiled on the pages that follow. These “future luminaries” come from all walks of life in the industry, including the design community, the supplier side (be it manufacturers, a rep agency and a distributor), and the research and academic communities. Their achievements, to date, are equally varied. Some have demonstrated uncommon design/project management expertise; some are at the forefront of new product development; while others are committed to bolstering lighting education.

A final word: this list is by no means all-encompassing. It is simply a representative sample—we believe a good one—of the future thought leaders of the lighting industry.



BRYAN KLAMMER
LIGHTING DESIGN
ALLIANCE
LOS ANGELES

CAREER CAPSULE

- Associate IALD;
LEED AP
- Key projects: Katsuya restaurant, Hollywood, CA (IES Illumination Award of Merit); S Bar, Hollywood, CA; Disney's Animal Kingdom Lodge; Disney's Art of Animation; Keyes Mercedes; Atrium Museum; Aquabella Rancho Belago

Some designers have all the luck. Take, for instance, Bryan Klammer, who has had the good fortune of unearthing extraordinary mentors wherever he goes. As a student at University of Colorado at Boulder, Klammer was taught by David DiLaura and Bob Davis. During a summer break, he interned at the Office of Visual Interaction in New York City, where he was exposed to the work of Jean Sundin and Enrique Peiniger. Following graduation, he landed a lighting design job at Lighting Design Alliance (LDA), where he has flourished under the guidance of Chip Israel and Kyllene Jones.

These opportunities to “work for such well-recognized and respected lighting design firms” are strokes of “extreme luck,” says Klammer. “I feel like I’m in the right place at the right time to work alongside these coaches. I’ve modeled my approach to projects on their examples. These wise and experienced mentors have given me confidence in my potential.”

But luck isn’t responsible for the host of accolades he’s received, including IES Illumination Awards of Merit and Lumen West Awards of Excellence and Merit for various LDA projects. Klammer has also translated that design acumen to the printed page by serving as editor of LDA’s *Ignite: The Art of Lighting Design*, a company profile book that had been on hold until he volunteered to complete it. “Initially, I gained a new appreciation for

photography and graphic design,” says Klammer. “As the process developed, I’ve learned that creating a high-quality book takes much more effort than I ever expected. However, by taking that time to make it my best, I’ve also learned that all the effort pays off. The book highlights some of our most beautiful and eye-catching projects, and it’s a great visual for current and prospective clients.”

A FEW KIND WORDS: “With his increasing ability to meet clients’ needs, keep sustainability in mind and develop innovative ways to provide lighting, Bryan has become a leader in his studio,” says Kyllene Jones, principal, LDA. “Regardless of his role, Bryan’s passion for design, keen eye for detail and developing expertise has helped ensure the success of several LDA projects. The quality of his work is exemplary and will only continue to impress in future years.”

DOWN THE ROAD: “I think many people have expectations of themselves that either commit them in the wrong direction or lead them to disappointment,” says Klammer. “So, to be honest, I don’t try to plan too far in advance, instead making the best of every situation as it arrives. However, I can definitely say I’d like to be such a strong and recognized contributor that I could be considered for any future project, lighting design or otherwise.”

Elizabeth Hall

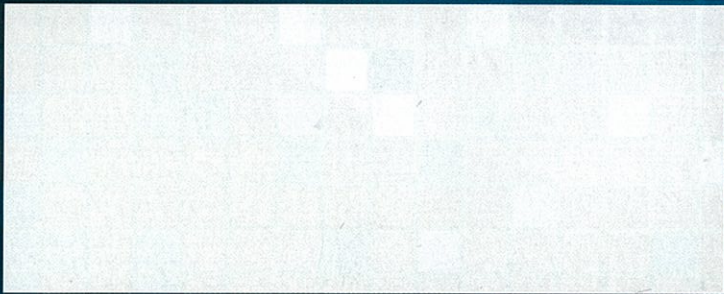
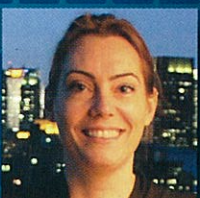
‘Katsuya Hollywood (an ultra-modern sushi restaurant) and Disney’s Animal Kingdom Lodge-Kidani Village (an African-themed hotel) were two of my most rewarding projects. Both were once-in-a-lifetime spaces’

LD+A

The magazine of the Illuminating Engineering Society of North America



FACES OF THE FUTURE



December 2010
Lighting Design and
Application
www.ies.org